

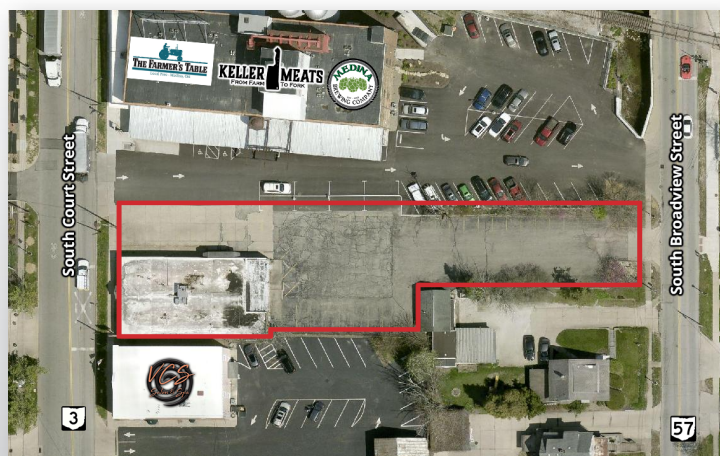


FOR SALE
400 S COURT STREET
MEDINA, OH 44256
SALE PRICE: \$825,000



PROPERTY HIGHLIGHTS

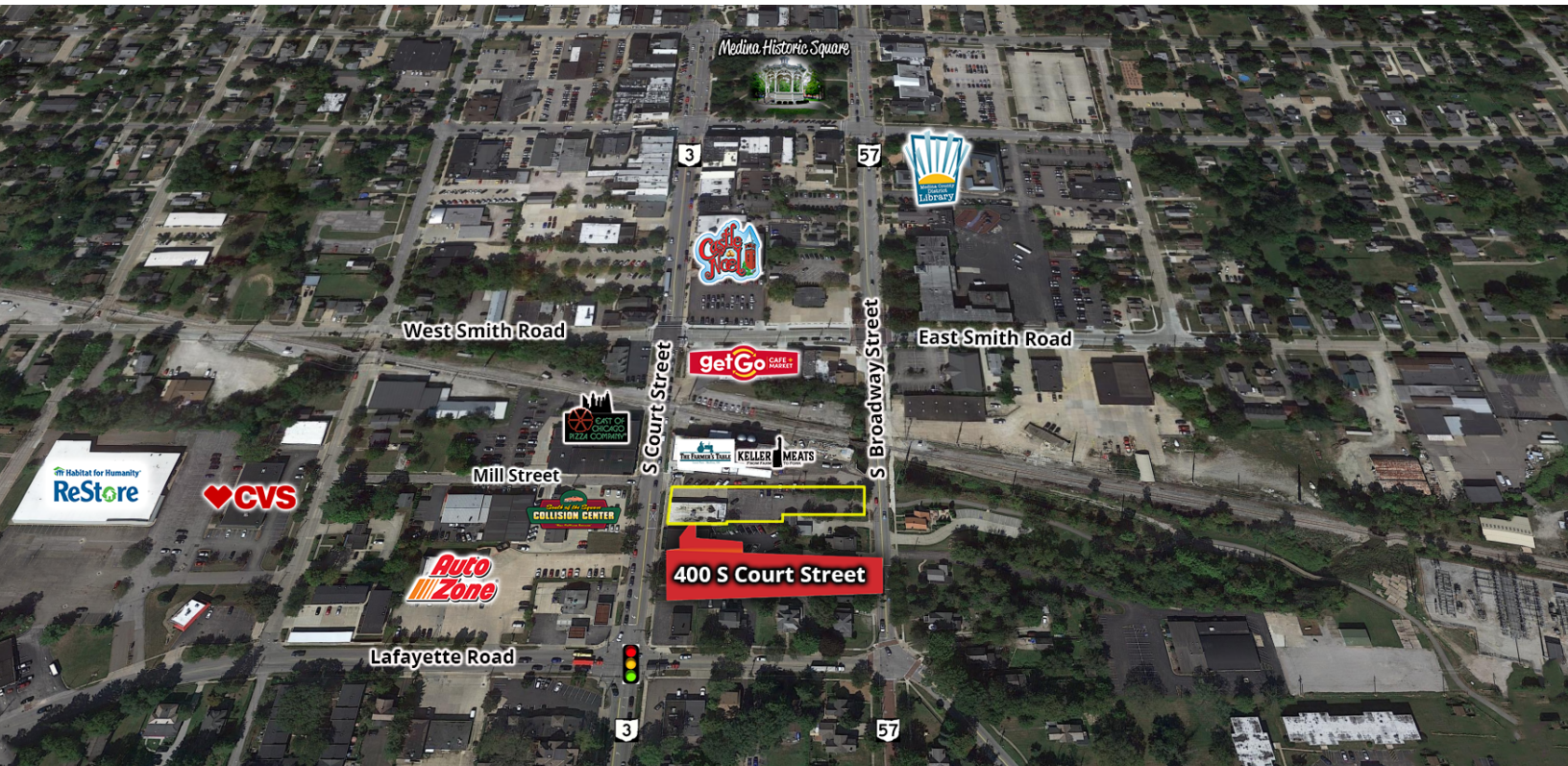
- Building Size: 4,192 SF
- Year Built: 1964
- Lot Size: 0.5 Acres
- Parking: 40± spaces
- Located in Medina Historic District
- Access to site via South Court Street and South Broadway Street
- Traffic Count: 13,800±
- Highway Access: 3.8 miles to I-71/SR-18 interchange
- Annual Taxes: \$6,006



LISTING AGENT

Morgan Faunce
Morgan@GerspacherGroup.com
330.722.5002





PROPERTY OVERVIEW

Rare opportunity for this 1/2 acre piece of land in Medina's Historic District, with a 4,192 sf building, lots of parking, and great access!

LOCATION OVERVIEW

Located within Medina's historic square, on South Court Street. A two-block walk uptown, in an area situated with tremendous opportunity. Property connects to two major arteries - Court Street and Broadway Street.

DEMOGRAPHICS

	1 MILE	3 MILES	5 MILES
Total Households	2,286	15,260	23,789
Total Population	6,263	39,754	62,100
Average HH Income	\$79,451	\$78,417	\$82,076

The information contained herein is from sources deemed reliable but no warranty or representation is made to the accuracy thereof.

